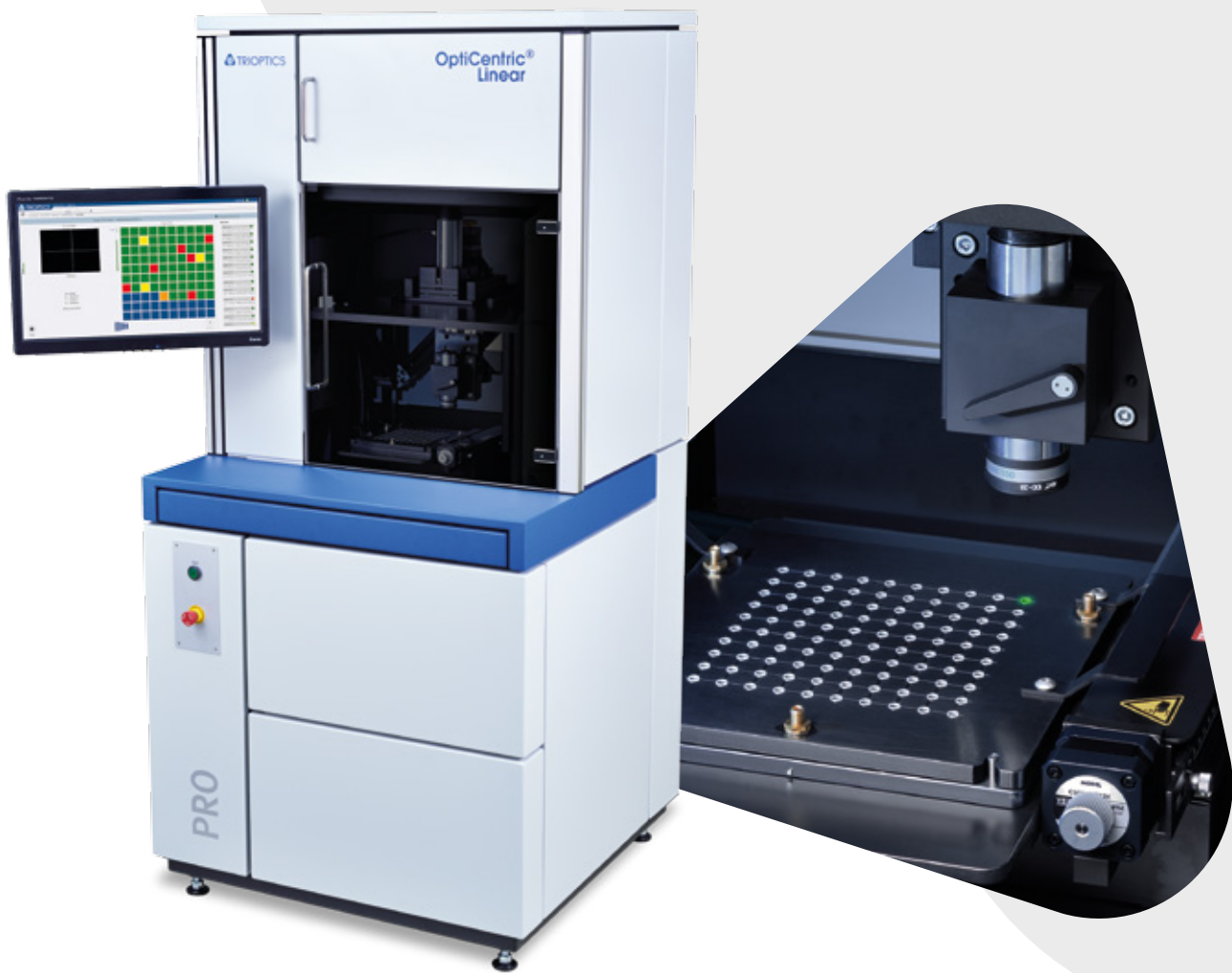




OptiCentric® Linear PRO

Automated High Speed Inspection and
Centration Measurement of Lens Systems



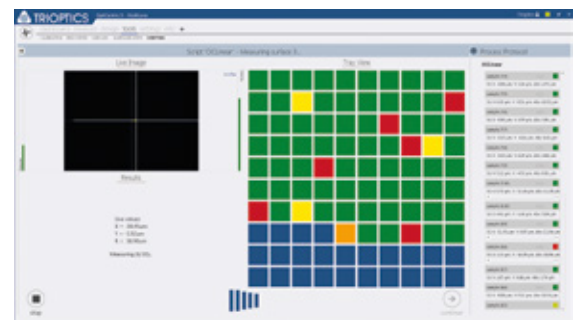
OptiCentric® Linear is a new line of metrology equipment featuring a unique design allowing the measurement of centration errors without the need for rotating the lens. The rotation-free measuring principle does not only dramatically reduce the inspection time but also simplifies the costly lens fixtures.

OptiCentric® Linear PRO is specifically designed for efficient centration measurement of lenses manufactured in large quantities. It is equipped with a tray handling system which provides sufficient positioning capabilities for the inspection of lens systems in serial or mass production.

Supported by TRIOPTICS well-established and multi-lingual OptiCentric® software that was enhanced by a tried-and-tested production screen, all measurement results are presented in a way that is easy to interpret. The software evaluates the test results with individual Pass/Fail criteria instantly. Implementation of a database access is available for fast data input and, more importantly, for central data processing.

Key Features

- Fast measurement with rotation-free, linear scanning test station
- Automated tray system for measurement of high volume quantities



OptiCentric® software for centration measurement with batch processing functionality

Technical Data

	OptiCentric® Linear PRO
Measurement accuracy	< 1 µm
Reference axis	Precise and error-compensated linear axis
Measurement time	1 sec ... 10 sec (depending on sample)
Tray size	Up to 150 x 150 mm ²
Linear stage	Motorized and PC-controlled
Measurement head	Focusable electronic autocollimator, 200 mm EFL
Light source	High power LED light source, VIS